

# Kenko Naturest® Makura





## Product Description

Part of the Nikken Sleep System – Makura means pillow in Japanese. A pioneer in sleep technology, Nikken introduces an innovation with the Makura! This revolutionary design transforms your pillow into the perfect headrest. A layered pillow created for total body renewal through deep and restful sleep, the Makura can be adjusted to the height and firmness you choose.

One side of the pillow gives you soft cushioning while the other provides firm support. And, there are 4 height and 6 comfort options, with each offering a proper contour for your neck. The exclusive ergonomic layered design even gives you the option of converting the Makura into two pillows!

The exclusive 3-part modular structure combines magnetic technology with tourmaline and Rubberthane for a gentle, relaxing sleep experience.

## Technologies

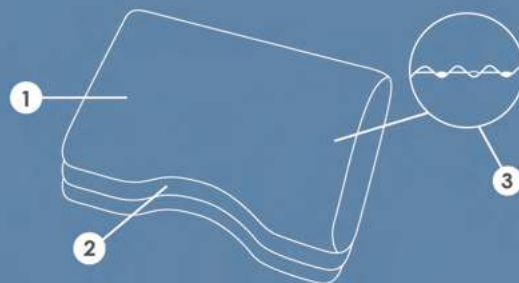
-  **Magnetic:** 750 gauss magnets provide a cocooning effect to help improve sleep quality.
-  **Tourmaline:** Creates a calming effect like the feeling of being in nature when exposed to pressure, heat or motion.
-  **Rubberthane:** Nodule structure provides a restful, massaging sensation.
-  **Volcanic ash:** Extracted from the Shirasu volcano in Japan and baked at more than 1000 degrees, part of the Rubberthane nodules that help regulate temperatures.

## Benefits

- The Makura is a pillow you'll want to take with you everywhere!
- Select soft cushioning or firm support (2 sides = 2 options)
- Fits to the contour of your neck with ergonomic support
- Tailored to your personal preference with 4 different heights and 6 comfort options
- Stimulating massage experience from Rubberthane nodules
- Fabric cover with sanitized treatment based on Swiss antimicrobial expertise helps deodorize and keep pillow fresh



## Components

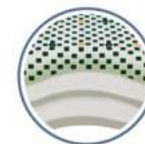
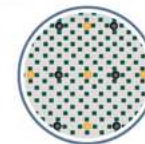


- ① **Outer lining:** 56% Polyester, 44% Viscose Rayon
- ② **Inner lining:** 82% Polyester, 18% Elastane
- ③ **Inner Structure:** Polyurethane, Natural latex, 24 Magnets and 18 Tourmaline



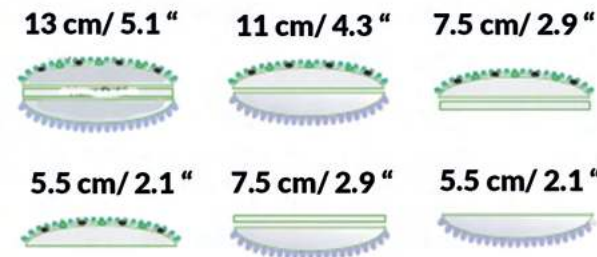
## Product Structure

- **LAYER A.**  
Outer foam layer with Rubberthane natural latex nodules, magnets and tourmaline, height 5.5 cm/ 2.1".
- **LAYER B.**  
Adjusts the height of the pillow to 2 cm/ 0.7".
- **LAYER C.**  
Smooth Rubberthane without nodules, with magnets and tourmaline, height 5.5 cm/2.1".



## Possible height measurements

- Dimensions of 58 x 35 x 13.5 cm. / 28.83 x 13.78 x 5.31"



**Ergonomic design that helps provide quality of sleep and deep rest.**

## Usage, Care and Warranty

Usage	Use as a conventional pillow or adjust the inner layers to the height of your choice. Do not fold the Makura.
Care Instructions	Remove outer cover and machine wash on a delicate cold cycle or dry clean on low heat (maximum 20°C/68°F). Internal pillow sections should be dry sponge cleaned only (do not get wet or dry clean). Do not remove the inner lining covers. Do not tumble dry any part of the pillow.
Warranty	1 year limited warranty

Kenko Naturest®  
**MAKURA**



**GET QUALITY SLEEP WHEREVER YOU ARE**

**CAUTION:** If you wear an electronic medical device such as a pacemaker or have a magnetically sensitive surgical implant, do not use magnetic products. Women in the first trimester of pregnancy or anyone who has any health problems should first consult their doctor before using magnetic products. Do not place magnetic products in direct contact with items that are sensitive to magnetism, such as watches, credit cards.